

Wall heating with tile

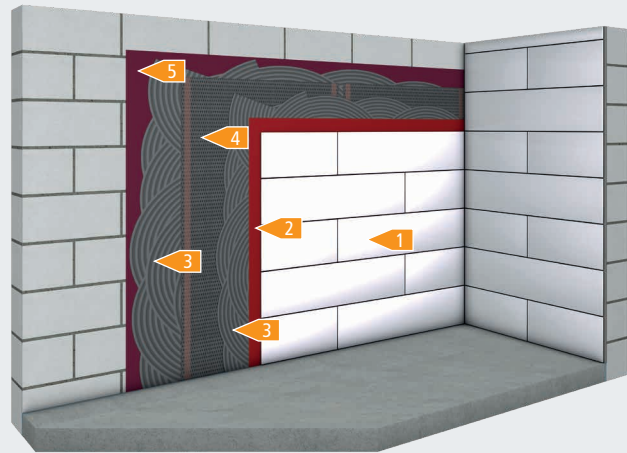
System E-ENERGY CARBON FLEECE

- 1 Tiles | Natural stone
- 2 Sealing in damp rooms if necessary
- 3 Tile adhesive approx. 2 mm per layer
- 4 E-ENERGY CARBON FLEECE
- 5 Primer

4 mm

0.4 mm

5 mm



Without additional thermal insulation

	-	No thermal insulation available		~ 8 kg / m ²	Without tiling
--	---	---------------------------------	--	-------------------------	----------------

- Prepare level, clean, load-bearing substrate. Dry screeds and wood-based panels must always be laid in two layers and offset
- For adhesive and product recommendations see material approvals
- A professional dew point calculation must be carried out when applying interior thermal insulation to exterior walls. The manufacturer's instructions must be observed.
- The technical values are indicative and depend on the manufacturer and the used materials can vary. The manufacturer's instructions and generally accepted rules of technology must always be observed.